

Punches CONFIX™

for CONFIX™ bulkhead fittings, for steel, aluminium, stainless steel



These punches can be used to punch the special cutout shapes for the CONFIX™ bulkhead fittings.

For max. 2 mm stainless steel (V2A versions), sheet steel, aluminium and plastic.

The punches are suitable for the hand hydraulic punch driver and the hydraulic foot pump. For the FWS-A 50 / FWS-B 48 punches, we only recommend the hydraulic foot pump.

Scope of delivery:

- Punch, die, counter nut and draw stud
- robust plastic storage case

Specifications

Material	Steel, hardened and burnished
Flame class	

Advantages & benefits

- For the special cut-out shapes for CONFIX™
- High-quality padded transport case
- Suitable for hand hydraulic punch driver by icotek or other manufacturers

Product types & sizes

Punch FWS-A16/20 / FWS-B11/16



Part No.	80095	Max. wall	2 mm
EAN	4251269333	thickness	
	316		
Package quantity	1		
Compatible with CONFIX™ FWS	FWS-A 16, FWS-A 20, FWS B11, FWS-B 16		
Number of centre punches	3		
Thread UNF	19 mm		
Punching material	Plastic, Stahl (St)		



Part No. **80195** Max. wall **2 mm**
EAN **4251269333** thickness
354
Package **1**
quantity
Compatible **FWS-A 16,**
with CONFiX™ **FWS-A 20,**
FWS **FWS B11,**
FWS-B 16
Number of **3**
centre
punches
Thread UNF **19 mm**
Punching **Stainless**
material **steel (V2A)**



Part No. **80096** Max. wall **2 mm**
EAN **4251269333** thickness
323
Package **1**
quantity
Compatible **FWS-A 25,**
with CONFiX™ **FWS-B 21**
FWS
Number of **3**
centre
punches
Thread UNF **19 mm**
Punching **Plastic, Stahl**
material **(St)**

Punch FWS-A 25 / FWS-B 21 V2A



Part No.	80196	Max. wall	2 mm
EAN	4251269333	thickness	
	361		
Package quantity	1		
Compatible with CONFIX™ FWS	FWS-A 25, FWS-B 21		
Number of centre punches	3		
Thread UNF	19 mm		
Punching material	Stainless steel (V2A)		

Punch FWS-A 32 / FWS-B 29



Part No.	80097	Max. wall	2 mm
EAN	4251269333	thickness	
	330		
Package quantity	1		
Compatible with CONFIX™ FWS	FWS-A 32, FWS-B 29		
Number of centre punches	4		
Thread UNF	19 mm		
Punching material	Plastic, Stahl (St)		

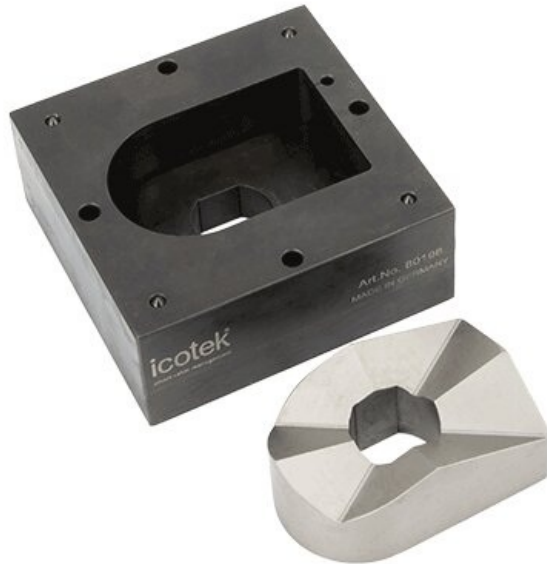


Part No. **80197** Max. wall **2 mm**
EAN **4251269333** thickness
378
Package **1**
quantity
Compatible **FWS-A 32,**
with CONFiX™ **FWS-B 29**
FWS
Number of **4**
centre
punches
Thread UNF **19 mm**
Punching **Stainless**
material **steel (V2A)**



Part No. **80098** Max. wall **2 mm**
EAN **4251269333** thickness
347
Package **1**
quantity
Compatible **FWS-A 40,**
with CONFiX™ **FWS-B 36**
FWS
Number of **4**
centre
punches
Thread UNF **19 mm**
Punching **Plastic, Stahl**
material **(St)**

Punch FWS-A 40 / FWS-B 36 V2A



Part No. **80198** Max. wall **2 mm**
EAN **4251269333** thickness
385
Package **1**
quantity
Compatible **FWS-A 40,**
with CONFIX™ **FWS-B 36**
FWS
Number of **4**
centre
punches
Thread UNF **19 mm**
Punching **Stainless**
material **steel (V2A)**

Punch FWS-A 50 / FWS-B 48



Part No. **80099** Max. wall **2 mm**
EAN **4251269333** thickness
255
Package **1**
quantity
Compatible **FWS-A 50,**
with CONFIX™ **FWS-B 48**
FWS
Number of **4**
centre
punches
Thread UNF **19 mm**
Punching **Plastic, Stahl**
material **(St)**



Part No.	80199	Max. wall	2 mm
EAN	4251269333	thickness	
	262		
Package	1		
quantity			
Compatible	FWS-A 50,		
with CONFiX™	FWS-B 48		
FWS			
Number of	4		
centre			
punches			
Thread UNF	19 mm		
Punching	Stainless		
material	steel (V2A)		